



Application Name: Product Configuration Software (PCS)
Current Version: 4.8.2

The following notes provide the revision history, list of known issues, and added features in the current software release. For more information, please call your Extron Application Engineer.

Updated: September 20th, 2021

Extron Products Affected:

Model Name	Minimum Firmware Version Required
Annotator 300	1.01
DAC 102	1.00
DA2 HD 4K	1.00
DA4 HD 4K	1.00
DA6 HD 4K	1.00
DA2/4/6 HD 4K PLUS Series	1.00
DA4 HD 4K PLUS	1.00
DA6 HD 4K PLUS	1.00
DA4 12G HD-SDI	1.00
DSC 301 HD	1.11
DSC 3G-3G A	1.00
DSC 3G-HD A	1.00
DSC DP-HD A	1.04
DSC HD-3G A	1.04
DSC HD-HD	1.00
DSC HD-HD 4K Series	1.00
DSC 401/DSC 401 A	1.00
DTP CrossPoint 108 4K Series	1.01
DTP CrossPoint 82/84 4K Series	1.01
DTP CrossPoint 84	1.00
DTP CrossPoint 84 IPCP MA 70	1.00
DTP CrossPoint 84 IPCP SA	1.00
DTP CrossPoint 86 4K Series	1.01
DTP2 CrossPoint 82 Series	1.03
DTP HD DA4 4K 230/330	1.00
DTP HD DA8 4K 230/330	1.00
DTP R DP 4K 230/330	1.00



DTP T DSW 4K 233/333	1.00
DTP T DWP 4K 232/332	1.00
DTP T EU 232/332	1.00
DTP T EU 232/332 (w/AUDIO)	1.00
DTP T FB 232/332	1.00
DTP T FB 232/332 (w/AUDIO)	1.00
DTP T HD2 4K 230/330	1.00
DTP T HWP 232/332	1.00
DTP T MK 232/332	1.00
DTP T MK 232/332 (w/AUDIO)	1.00
DTP T SW4 HD 4K	1.00
DTP T USW 233/333	1.00
DTP T UWP 232/332 D	1.00
DTP T UWP 4K 232/332 D	1.00
DTP2 T 203	1.00
DTP2 R 212/ DTP2 R 212 SA	1.00
DTP2 T 212	1.00
DTP2 T 204	1.02
DTP2 T 202 FB	1.00
New DTP3 T 202	1.00
New DTP3 R 201	1.00
DVC RGB-HD A	1.00
DVS 605 Series	1.19
DXP 168 HD 4K	1.00
DXP 1616 HD 4K	1.00
DXP 1616 HD 4K Plus	2.00
DXP 44/84/88 HD 4K Series	1.00
DXP 42/44/84/88 HD 4K PLUS Series	1.00
EDID 101H 4K	1.00
EDID 101H 4K Plus	1.00
FOX II DP Series	1.00
FOX II T DP 4K MM / SM	1.00
FOX II R DP 4K MM / SM	1.00
FOX II T HD 4K MM / SM	1.00
FOX3 Matrix 24x, 40x, 80x, 160x, 320x	1.00
FOX3 T 301	1.00
FOX3 T 311	1.00
FOX3 R 301	1.00



FOX3 R 311	1.00
FOX3 T 201	1.01
FOX3 SR 201	1.01
HAE 100 4K	1.00
HAE 100 4K Plus	1.00
HAI 100 4K	1.00
HAI 100 4K Plus	1.00
HC 404 (Listed as HCR 102)	1.00
HC 403 (Listed as HCR 102)	1.02
HC 402 and EU/MK (Listed as HCR 102)	2.06
HDMI DA Series	1.00
HDP 101 4K	1.00
IN1604 DTP	1.00
IN1604 HD	1.01
IN1606	2.24
IN1608 Series	2.24
IN1804 Series	1.00
IN1806/1808 Series	1.01
ISS 608	1.00
MediaPort 200	1.00
MPS 601	1.04
MPS 602/MPS 602 SA/ MPS 602 MA	1.00
MPS 602 w/330 output	1.00
PowerCage 401	1.00
PVS 405D	1.00
PVS 407D	1.00
ShareLink Pro 1000/1100	1.06.0000-b006
ShareLink Pro 500	1.06.0000-b006
SSP 200	1.00
SW2/4 HD 4K	1.00
SW2/4 HD 4K PLUS	1.00
SW2/4 HDMI	1.00
SW6/8 HDMI	2.00
SW6/8 HD 4K	1.00
SW6/8 HD 4K PLUS	1.01
SW4 12G HD-SDI	1.00
USB Extender Plus Series	1.00
USB Plus Matrix Controller	2.06 (Matrix Software:1.10)
VLR 302	1.00



VLR 302 EU	2.00
------------	------



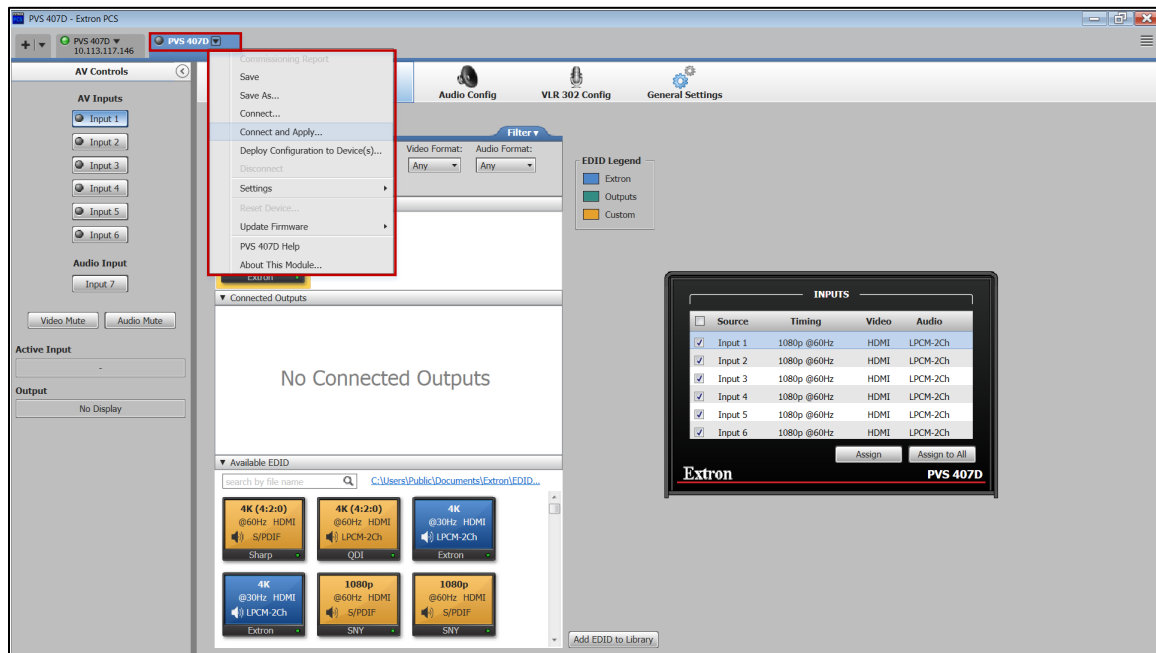
TECH NOTES

Minimum System Requirements:

- Processor: Intel Core 2 Duo or AMD equivalent
- 2 GB or more recommended
- Serial port, USB port, or network connection with a data transfer rate of 100 Mbps, 100 Mbps recommended
- 1280x768 minimum resolution
- 4.5 GB disk space
- Microsoft® Windows® 7/8/10
- Microsoft .NET® framework 4.8

Supported SW HDMI Series - Only newer versions of the SW2 HDMI (60-841-21) and SW4 HDMI (60-841-22) are supported. Part numbers 60-841-01 and 60-841-02 are not supported.

PVS 405D and PVS 407D – RS-232 Pass-Thru via MLC - MLC 104 IP Plus and MLC 226 IP Series RS-232 pass-thru connection is supported in this software by selecting the device under the 'New Configuration File' option. Once the device page tab is open, click on the drop-down arrow, where you can select either 'Connect' or 'Connect and Apply'. This option is not available under the 'TCP/IP' tab. PCS does not support pass-thru connection via the MLC Plus controllers.





PVS 405D and PVS 407D Telnet Port & Pass-Thru Port - Default MLC 104 IP Plus and MLC 226 IP series telnet port is 23 and pass-thru port is 2003.

Firmware Update for PVS 405D - Tools drop-down menu is only available when connecting to the switcher via USB connection. The software will disconnect you from the device prior to updating the firmware. You may need to reconnect USB connection after the update is complete.

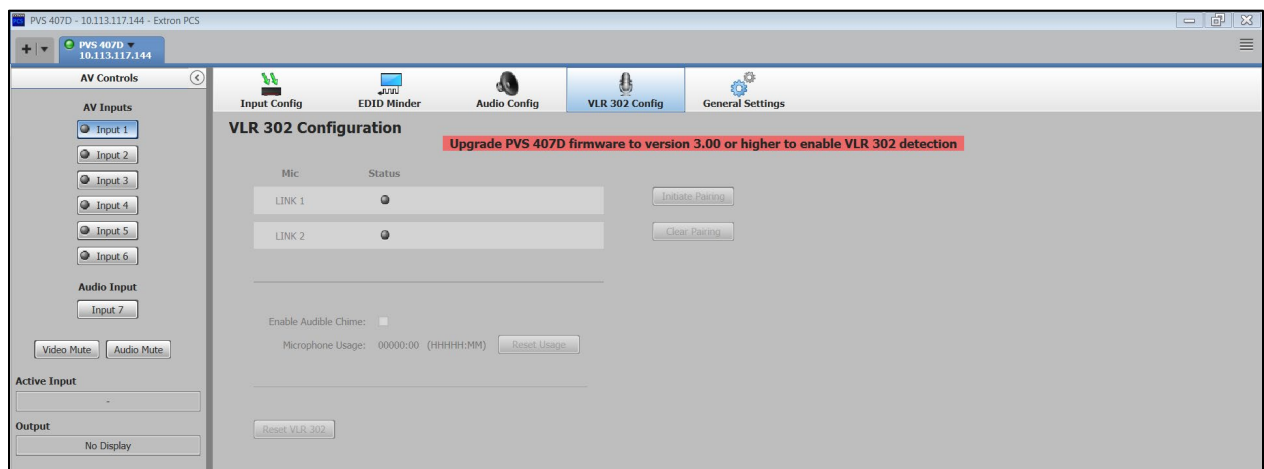
MLC Pass-thru for PVS 407D – The Audio Files tab on the Audio Configuration page will be grayed out when connecting via MLC Pass-thru connection.

Audio Files for PVS 407D – Audio files will not be synced to the PVS 407D device when connecting via MLC Pass-thru connection. A direct TCP/IP or USB connection is required.

Deploy and apply PVS 407D configuration – When trying to deploy and apply a PVS 407D configuration file containing 4K EDID assigned to the HDMI Inputs (saved using PCS 3.5.4 or above) to PVS 407D switchers, running the previous firmware version of 1.02 or below will result in the HDMI input EDID default to 720p @ 60 Hz. Users can upgrade the PVS 407D switchers to firmware version 2.00 or above, and deploy the configuration again.

VLR 302 configuration in PVS 407D device module – Users must upgrade the PVS 407D switcher to firmware version 3.00 or above for the **VLR 302** configuration option to be available on the PVS 407D device module.

VLR 302 EU configuration in PVS 407D device module – Users must upgrade the PVS 407D switcher to firmware version 5.02 or above for the **VLR 302 EU** configuration option to be available on the PVS 407D device module.





PVS 407D Audio Stream tab – The PVS 407D audio stream tab in PCS does not appear when the PVS 407D Audio Stream LinkLicense is not applied. Minimum PVS 407D firmware version 5.00 or above is required with LinkLicense applied.

Connecting to HC 400 Series Meeting Space Collaboration Systems – PCS discovers and connects to the HCR 102 receiver for HC 400 Meeting Space Collaboration Systems. Once PCS establishes a connection to the receiver, it displays the HCT transmitter input configurations according to transmitter model.

Connecting to HDP 101 4K – The HDP 101 4K firmware will need to be at minimum v1.01.0003 to connect properly to PCS 4.4.0.

Connecting to DTP R DP 4K 230/330 – The DTP R DP 4K firmware will need to be at minimum v1.01.0003 to connect properly to PCS 4.4.1.



KNOWN ISSUES

The following is a list of known software issues found in Product Configuration Software v4.8.2

Issue (Originated in v4.8.1) – Front Panel Lockout (Exec Mode) for FOX3 SR 201 does not function properly – The Front panel lockout settings cannot be adjusted on the FOX3 SR 201.

Issue (Originated in v4.6.2) – System Backup option for ShareLink Pro 500/1000 does not backup file folders for Logo Config – The Logo Config local file folders and content are unable to be backed up and restored.

Issue (Originated in v4.6.2) – “Failed to Connect” message when connecting to a scaler with an ‘admin’ password set. – Connecting to scalers running specific firmware revisions may result in a “Failed to Connect” message. Affected devices include the DVS 605, IN1606/08, and the IN180x Series. A workaround is to connect via the PCS TCP/IP tab, discretely entering the device IP, ‘admin’ password, and Telnet Port: 23.

Issue (Originated in v4.5) – IPCP Communication Settings displayed incorrectly in Edit Pop up – The IP of an out of the box IPCP is displayed incorrectly in the Edit pop up. The Edit pop up and subnet/gateway fields are un-editable. However, you can still set the IP of the device.

Issue (Originated in 4.5) - PCS can only support one IPCP connection at a time – Devices will not be discovered via an IPCP controller when more than one connection instance is made to that respective controller.

Issue (Originated in 4.5) - Via TCP/IP, PCS will fail to connect to an IPCP when hostname is used instead of IP - PCS will not connect to the controller when its hostname is used instead of IP. You can connect to the device via the discovery window.

Issue (Originated in 4.5) - The Edit function for an off-line configuration of a target device may not work. - The edit function for an off-line config may not work for the target device.

Issue (Originated in 4.5) – IN1808 Noise Gate meters do not accurately represent the DSP processing that’s occurring. – When the signal is above the threshold the meters inaccurately show attenuation to the signal, and when the signal is below the threshold the meters do not show the signal being attenuated.

Issue (Originated in 4.5) – DXP 42 HD 4K PLUS – Force Output Color Bit Depth setting is not shown correctly. – When viewing the output color bit depth



setting on the DXP 42 HD 4K PLUS, PCS will show that it is set to Auto after reconnecting to the software.

Issue (originated in v4.3.0) – For the PowerCage FOX 401, the Update to Firmware Cards does not function properly – Under the Update Firmware option, the Update to Firmware Cards does not update the firmware. The current workaround is to utilize the Default Webpage to update the firmware to the cards.

Issue (originated in v4.2.0) – Firmware update timeout when Admin and User password entered before the update – When entering an Admin and a User password before a firmware update, the firmware update will timeout. The workaround is to enter in an Admin and User password, disconnect from the device, and reconnect, before commencing a firmware update.

Issue (originated in v4.1.0) – Firmware update issue with MPS 601 - Unable to update firmware. The current workaround is to update firmware using PCS version 4.0.5 or earlier.

Issue (originated in v4.1.0) – For the SW HD 4K Series – The connected display's EDID is not shown if the input selected does not have an active source connected. The current workaround is to select an input with active source connected.

Issue (originated in v4.0.0) – Multiple open device tabs cause lag in PCS – PCS will lag when there are multiple device tabs open, especially when one of the device tabs is for a DTP CrossPoint device. The workaround is to reopen PCS and not have more than two DTP CrossPoint device tabs open at a time.

Issue (originated in v3.5.6) – For the DXP HD 4K, the HDCP compliant display output is shown as non-compliant after hot plugging display – When a display is hot plugged, PCS will intermittently reflect incorrect output(s) HDCP compliant status. The workaround is to exit PCS and reconnect to the DXP HD 4K matrix.

Issue (originated in v3.3.1) – IN160x / DSC Series – Current Output Resolution and/or Refresh Rate settings may be occasionally blank. Upon initial connection to the device, there is a small chance that the Output Resolution and/or Refresh Rate setting may appear as a blank field with a red outline. If this issue is experienced, please try disconnecting and reconnecting to the product to resolve the problem.

Issue (originated in v1.4.0) – For the FOX II DP, only HDCP capable displays will appear in the EDID Minder tab's Connected Outputs section - Only HDCP-compliant displays connected to the transmitter Loop-Thru output will appear in the EDID Minder Connected Outputs section. If a non-HDCP compliant display is connected to the transmitter Loop-Thru output, the Connected Outputs section will be blank and the EDID will not be available using the PCS software tool.



Released Version: 4.8.2

Affects:

Engineering Revision:

Software Revision: 4.8.1

Date: July 19th, 2021

The following is a list of changes and fixes in this release.

Added Feature: Support for DTP3 T 202 and DTP3 R 201 - PCS now supports DTP3 T 202 and DTP3 R 201.

Added feature: Added compatibility for FOX and FOX II endpoints. This allows FOX and FOX II transmitters to be switched by a FOX3 Matrix Switcher to FOX and FOX II receivers.

Fixed issue (Originated in 4.8) - For IN1604: AV controls do not update when HDBT switches. This issue has now been resolved.

Fixed issue (Originated in 4.8) - IN1604: Always Encrypt Output appeared twice under general settings – The second “Always Encrypt Output” failed to mention “(with continuous DVI trials)”. This issue has now been resolved.

Fixed issue (Originated in 4.8) - DSC 301 HD: OSD duration on screen allowed users to go over 500 seconds – Users were able to select 501 for the OSD duration on screen settings under the general settings tab. This issue has been resolved.



Released Version: 4.8.1

Affects:

Engineering Revision:

Software Revision: 4.8

Date: June 9th, 2021

The following is a list of changes and fixes in this release.

Added Feature: Support for FOX3 SR 201 – PCS now supports the FOX3 SR 201 device.

Added Feature: ShareLink Pro Miracast support - PCS now supports Miracast connectivity for ShareLink Pro products.

Fixed Issue (Originated in v4.6) -Incorrect French translation in ISS 608 module – “Program” and “Preview” were incorrectly translated to French. This issue has been resolved.



Software Release History

Released Version: 4.8

Affects:

Engineering Revision:

Software Revision: 4.7.1

Date: March 22nd, 2021

The following is a list of changes and fixes in this release.

Added Feature: Application Licensing – PCS will now require an Extron Insider login at first login in order to be used.

Added Feature: Support for DSC 401/ DSC 401 A - PCS now supports DSC 401 and DSC 401A.

Added Feature: Support for FOX3 T 201 - PCS now supports the FOX3 T 201 device.

Added Feature: Support for IPCP Pro xi control processors - PCS now supports the IPCP Pro xi and Q xi control processors for AV LAN.

Added Feature: MediaPort 200 Mix L/R line In - PCS now supports "Mix L/R Line In" which allows users to enable / disable the line in audio passing to the line output on the MediaPort 200.

Added Feature: MediaPort 200 secure connection - PCS now securely connects to the MediaPort 200.

Added Feature: Firmware version displayed - PCS now displays firmware versions on the device discovery page.

Added Feature: MAC address information - PCS now displays device MAC Address information for Mass Restore/Firmware related functions.



Fixed Issue (Originated in v4.7) - Cannot connect to AV LAN devices from TCP/IP tab – Users will not be able to connect to AV LAN devices via the TCP/IP tab in PCS. This issue has been resolved.

Fixed Issue (Originated in v4.7) - Cannot connect to USB Plus Matrix Controller – Users are not able to connect to USB Plus Matrix Controller in PCS. This issue has been resolved.

Fixed Issue (Originated in v4.5.0) - HC 400 Series - Backup and Restore feature fails for TCP/IP connections made through the AVLAN port of an Extron control processor. This issue has been resolved.

Fixed Issue (Originated in v4.5) - ShareLink Pro 500 – The Communication Setting RS-232 was previously showing and is now removed as it is not supported using the ShareLink Pro 500. This issue has been resolved.

Fixed Issue (Originated in 4.6.0) - ShareLink Pro Series – Software is stuck at the Verifying Firmware dialog instead of displaying the 'Firmware file not compatible with this device' when the firmware mismatch occurs. This issue has been resolved.

Fixed Issue (Originated in 3.5.6) - DVS 605 – Digital output status under the AV Control Panel would always display "No Display" whether a display was connected or not. This issue has been resolved.

Fixed Issue (Originated in 4.3) - MediaPort 200 – Digital I/O values in the Audio section were not updating after disconnecting & reconnecting to PCS. This issue has been resolved.

Fixed Issue (Originated in 4.7) - MediaPort 200 – Horizontal and Vertical Size/Positions were being overwritten when a hot plug of the USB output took place. This issue has been resolved.



Released Version: 4.7.1

Affects:

Engineering Revision:

Software Revision: 4.7

Date: December 17th, 2020

The following is a list of changes and fixes in this release

Added Feature: Password tab added for SW HD 4K PLUS Series: PCS now supports the ability to set and change the admin and user passwords for the SW HD 4K PLUS series.

Added Feature – Additional Listening Mode selection for SSP 200 – DTS Neural:X Listening Mode is now available for the Dolby Digital input source format.

Added Feature – HC 400 Series – HDCP Authorization for HC 402 input 2 – HDCP Authorization can now be configured for HDMI input 2 of the HC 402 which was previously limited to local HDMI input 1 only. This feature requires HCR 102 firmware v2.09.

Fixed Issue (Originated in v4.7.0) – SSP 200 7.1.4 Speaker Configuration – Enabling a 7.1.4 Speaker Configuration was previously unavailable. This issue has been resolved.

Fixed Issue (Originated in v4.7.0) - SSP 200 Downmix unavailable for 6.x.0 configurations - In 6.0.0 or 6.1.0 Speaker Configurations with Front L/R, Center, Surround L/R, and Center Back speakers enabled, Downmix could not be enabled in software. This issue has been resolved.

Fixed Issue (Originated in v4.7.0) - SSP 200 HDMI Resolution status reads No Signal - HDMI Input 1 Resolution always read "No Signal" under Input Configuration. This issue has been resolved.



Fixed Issue (Originated in v4.7.0) – SSP 200 I/O Panel Source Format display - Source Format displayed both Dolby Digital Plus and Dolby Digital Plus ATMOS if either was present. Also, Source Format displayed Dolby TrueHD and Dolby TrueHD ATMOS if either was present. This issue has been resolved.

Released Version: 4.7

Affects:

Engineering Revision:

Software Revision: 4.6.3

Date: November 10th, 2020

The following is a list of changes and fixes in this release

Added Feature: Support for SSP 200: PCS now supports the SSP 200 device.

Added Feature: Ability to Disable communication on LAN port on all DXP HD 4K PLUS Devices: PCS now supports the ability to disable and re-enable the LAN port of all DXP HD 4K PLUS devices.

Feature improvement: Ability to display Device name of mass upload related functions.

Fixed Issue (originated in v4.6.3) - DTP2 CrossPoint 82 – Output Resolution Monitor on EDID Minder tab would not show output resolution. This issue has been fixed in PCS v4.7.

Fixed Issue (originated in v4.6.3) - DTP2 CrossPoint 82 – An error message would pop up when attempting to add an EDID file to the Library. This issue has been fixed in PCS v4.7.

Fixed Issue (originated in v4.6.3) - DTP2 CrossPoint 82 - EDID files were missing from the favorite table under the EDID Minder tab. This issue has been fixed in PCS v4.7.

Fixed Issue (originated in v4.6.3) - DTP2 CrossPoint 82 – No Data was provided for connected monitors in the EDID Minder Tab. This issue is fixed in PCS v4.7.

Fixed Issue (originated in v4.6) - MediaPort 200 - EDID Minder tab was missing EDID for various frame rates. This issue has been fixed in PCS v4.7



Fixed Issue (originated in v4.6.3) - MediaPort 200 – Backup files were failing to be restored - This issue has been fixed in PCS v4.7.

Fixed Issue (originated in v4.6.3) - DSC Family – No Data was provided for connected monitors in the EDID Minder Tab. This issue is fixed in PCS v4.7.

Fixed Issue (originated in v4.4.0) – HC 400 Series – Updating firmware to multiple HCR devices is not successful – Updating firmware to more than 2 HCR devices simultaneously resulted with some units intermittently stuck in the same progress state. This issue has been resolved in PCS v4.7.0.

Fixed Issue (originated in v4.4.1) – HC 400 Series – Manually setting static IP address has no affect – Manually setting a static IP address after disabling DHCP resulted with the previous IP shown in PCS until a power cycle was completed. This issue has been resolved in PCS v4.7.0.

Fixed Issue (originated in v4.5.0) – HC 400 Series – Duplicate 1080p EDID blocks listed – EDID Minder listed two 1080p @ 60Hz EDID blocks under the available EDID section instead of listing 1080i and 1080p separately. This issue has been resolved in PCS v4.7.0.



SOFTWARE RELEASE HISTORY

Released Version: 4.6.3

Affects:

Engineering Revision:

Software Revision: 4.6.2

Date: October 5th, 2020

The following is a list of changes and fixes in this release

Added Feature: Support for DTP2 T 204 – PCS now supports DTP2 T 204

Added Feature: Support for DTP2 T 202 FB – PCS now supports DTP2 T 202 FB

Added Feature: For Sharelink Pro 500/1000 - PCS now supports WebShare (TM) allowing sharing of content using a Chrome Browser.

Fixed Issue (originated in v4.6) – ShareLink Pro 500/1000– Default state not expanded for Image Transition (Logo Config). This issue has been resolved in PCS v4.6.3.



Released Version: 4.6.2**Affects:****Engineering Revision:****Software Revision: 4.6.1****Date: May 26th, 2020**

The following is a list of changes and fixes in this release

Added Feature: Support for DTP2 R 212/ DTP2 T 212 /DTP2 R 212 SA – PCS now supports DTP2 R 212, DTP2 T212 and DTP 2 R 212 SA

Added Feature: For Sharelink Pro 1000 - Support for Enhanced Logo Configuration, H.264 Streaming, and Expo Mode Configuration on ShareLink Pro 1000

Added Feature: For Sharelink Pro 500 - Support for Enhanced Logo Configuration on ShareLink Pro 500

Added Feature: Support for VLR 302 EU – PCS now supports the VLR 302 EU VoiceLift Pro Receiver (part# 60-1637-02).

Added Feature: PVS 407D

- PCS now supports the ability to configure the PVS 407D audio stream settings.
- PCS now supports mass configuration for the PVS 407D audio stream settings.
- Audio stream information has been added to the PVS 407D system commissioning report.
- The PVS 407D device module now supports the configuration for the new VLR 302 EU VoiceLift Pro Receiver (part# 60-1637-02) when detected.



Released Version: 4.6.1

Affects:

Engineering Revision:

Software Revision: 4.6

Date: April 7th, 2020

The following is a list of changes and fixes in this release

Added Feature: Support for FOX3 Matrix 24x, 40x, 160x, 320x – PCS now supports the FOX3 Matrix 24x, 40x, 160x, 320x

Added Feature: Support for FOX3 T 311 – PCS now supports the FOX3 T 311

Added Feature: Support for FOX3 R 311 – PCS now supports the FOX3 R 311

Added feature: Support for HAE 100 4K Plus – PCS now supports HAE 100 4k Plus

Added feature: Support for EDID 101H 4K Plus - PCS now supports EDID 101H 4K Plus

Added feature: Support for HAI 100 4K Plus – PCS now supports HAI 100 4K Plus

Added feature: Support for DXP 1616 HD 4K Plus – PCS now supports DXP 1616 HD 4K Plus

Fixed Issue (originated in v4.6) – Annotator 300 – PCS would enter the wrong Network Path to the unit - This issue has been resolved in PCS v4.6.1.

Fixed Issue – (originated in v4.6) – MediaPort 200 - Multiples copies of 1080p were populated in EDID Minder – EDID minder page would display 11 copies of 1080p@60 EDID and would not show refresh rates other than 60Hz. This issue is resolved in PCS 4.6.1



Fixed Issue – (originated in v4.6) – MediaPort 200 – Uploading images through USB will cause them to be distorted – Loading images to Logo Configuration tab through USB will cause the image to be distorted or blank. This issue is resolved in PCS 4.6.1 by no longer allowing logo management through USB.

Released Version: 4.6

Affects:

Engineering Revision:

Software Revision: 4.5.1

Date: January 20th, 2020

The following is a list of changes and fixes in this release

Added Feature: Support for FOX3 Matrix 80x – PCS now supports the FOX3 Matrix 80x

Added Feature: Support for FOX3 T 301 – PCS now supports the FOX3 T 301

Added Feature: Support for FOX3 R 301 – PCS now supports the FOX3 R 301

Added Feature: Support for ISS 608 – PCS now supports the ISS 608

Added Feature: Support for ShareLink Pro 500 - PCS now supports ShareLink Pro 500

Added Feature: Support for DTP2 CrossPoint 82 series – PCS now supports the DTP2 CrossPoint 82 series

Fixed Issue (originated in v4.5.0) – DSC Series / IN1604 series – PCS would fail to successfully backup and/or restore a device configuration - This issue has been resolved in PCS v4.6.0.

Fixed Issue (originated in v4.4.2) – IN1806 / IN1808 Series – Audio delay goes to max on audio “units” adjustment - If the units for the audio delay setting were adjusted (e.g. samples --> meters) it could result in the delay setting being set to the maximum value. This issue has been resolved in PCS v4.6.0.

Fixed Issue (originated in v4.5.0) – HC 400 Series – PCS crashes when editing IP address - Pressing the Edit button for Device Discovery IP Address caused PCS software to crash. This issue has been resolved in PCS v4.6.0.



Released Version: 4.5.1

Affects:

Engineering Revision:

Software Revision: 4.5

Date: August 21, 2019

The following is a list of changes and fixes in this release

Added Feature: Support for DAC 102 – PCS now supports DAC 102.

Added Feature: Support for IN1804 DI/DO - PCS now supports IN1804 DI/DO.

Added Feature: Support for DXP 42 HD 4K PLUS – PCS now supports DXP 42 HD 4K PLUS.

Fixed Issue (originated in v4.3.2) – IN1804 / IN1806 / IN808 – PCS would fail to apply a saved configuration to the device if the configuration did not include user logo images and/or audio files. This issue has been resolved in PCS v4.5.1.

Fixed Issue (originated in v4.3.2) – IN1806 / IN808 – When the Mic Mute Group Master was enabled audio signal on mic inputs could result in the audio ducker engaging. The Mic Mute Group Master has been updated to include upstream mute OIDs to prevent audio ducking from engaging when mic inputs are muted via the Group Master. To update the Mic Mute Group Master on an IN1806 or IN1808 use PCS v4.5.1 to remove both Mic 1 and Mic 2 from the Mic Mute Group and then add Mic 1 and/or Mic 2 as members of the Group Master.



Released Version: 4.5**Affects:****Engineering Revision:****Software Revision:** 4.4.3**Date:** April 25, 2019

The following is a list of changes and fixes in this release

Added Feature: Enhanced AV LAN Support for PCS – IPCP Pro Series firmware version 3.03.0000-b006 is the minimum version required for Extron Product Configuration Software (PCS) to connect to control processors with an AV LAN to discover, manage, and update AV LAN devices via PCS.

Added Feature: Support for DTP2 product – PCS now supports the DTP2 T 203.

Fixed Issue (originated in v4.4.2) - IN1606, IN1608 & IN1608 xi volume will be set to max when PCS is closed – Group masters 1,3,4,5,6 and 8 were being set to maximum levels upon disconnecting from PCS if the audio tab was visible.



Released Version: 4.4.3

Affects:

Engineering Revision:

Software Revision: 4.4.2

Date: March 25, 2019

The following is a list of changes and fixes in this release

Added Feature: Added support for HC 402 systems – The HC 402 systems are now supported in PCS. The system shall continue to be represented by the HCR 102 receiver but is now combined with new transmitters HCT 101 D, HCT 101 EU or HCT 101 MK to form the HC 402 system.



Released Version: 4.4.2**Affects:****Engineering Revision:****Software Revision:** 4.4.1**Date:** January 10th, 2019

The following is a list of changes and fixes in this release.

Added Feature: Added support for IN1806 and IN1808 – The IN1806 and IN1808 are now supported in PCS

Added Feature: ShareLink Pro 1000 image files are included in backup and restore feature – PCS now includes image files in the backup configuration file. The image files in the Logo Config tab for Standby and Connected images will be available after restoration.

Fixed Issue (originated in v4.4.1) – For the IN1804, Reset Device Settings does not Default Control Config Settings – Any changes made to Control Config setting will not return to default after selecting “Reset Device Settings”

Fixed Issue (originated in v4.4.1) – For the IN1804 DI, Incorrect Name on for input #4 – Connector Label on the IN1804 DI Input #4 states "HDMI/DVI" instead of "DTP/XTP" Note that this ONLY applies to the DI model 60-1699-02 and the base (-01) and DO (-03) should continue to list HDMI/DVI for Input #4.

Fixed Issue (originated in v4.4.1) – For the IN1804, Pressing “Restore this device” does not restore Logo Images or Audio files – Deleting an audio file or logo image after backing up a file will cause those files to be lost even after restoring the backup file to your device.

Fixed Issue (originated in v4.4.1) – For the IN1804, Some Baud rates are displayed as “Invalid” – PCS displays the following baud rates as 'Invalid': 300, 600, 1200, 1800, 2400, 3600, 4800, 7200, 14400, 28800 & 57600.

Fixed Issue (originated in v4.4.1) – For the IN1804, Input Name does not Reset – After placing a name in the input text box, the name cannot be deleted or reset.



Fixed Issue (originated in v4.4.1) Update Failure When Attempting to Load New Firmware – While attempting to update firmware using TCP/IP or USB an “Update Failed” error message would appear.

Fixed Issue (originated in v4.4.1) – For the IN1804, Unable to Reorganize Contact Tally Actions – Selected Actions inside of the Control Configuration tab cannot be moved up or down when trying to edit

Released Version: 4.4.1

Affects:

Engineering Revision:

Software Revision: 4.4.0

Date: November 29, 2018

The following is a list of changes and fixes in this release.

Added Feature – Added support for DTP RP DP 4K 230/330 – The DTP R DP 4K 230/330 are now supported in PCS.



SOFTWARE RELEASE HISTORY

Released Version: 4.4.0

Affects:

Engineering Revision:

Software Revision: 4.3.2

Date: October 8, 2018

The following is a list of changes and fixes in this release.

Added Feature – Added support for ShareLink Pro 1000 – The ShareLink Pro 1000 is now supported in PCS.

Added Feature – Added support for DA4 12G HD-SDI – The DA4 12G HD-SDI Distribution Amplifier is now supported in PCS.

Added Feature – Added support for SW4 12G HD-SDI – The SW4 12G HD-SDI Switcher is now supported in PCS.

Added Feature – Ability to update HCR 102 firmware via Ethernet– The firmware for HCR units connected via SSH Ethernet connection can now be updated within PCS.

Fixed Issue (originated in v4.3.2) – For the IN1804 series, the EDID Minder resolution filter does not list all available resolutions – On the EDID Minder tab, the dropdown filter box for Resolution is a partial list and does not contain the resolutions for all available EDID's. This issue has been resolved.

Fixed Issue (originated in v4.3.0) – PVS 407D connection lost when doing mass deploy – When trying to mass deploy a PVS 407D configuration file containing custom EDID assigned to the digital inputs, connection was lost message is displayed on the Deploy Configuration to Device(s) dialog. This issue has been resolved.

Fixed Issue (originated in v4.1.0) – For the PVS 407D – When trying to save the PVS 407D Commissioning Report the integrator and consultant fields are filled automatically. Both fields are now blank for user entry. This issue has been resolved.

Fixed Issue (originated in v4.3.1) – For the HCR 102, the IP Address Edit button does not work – Communication settings edited through the Device Discovery page would not save. This issue has been resolved.



Fixed Issue (originated in v4.3.1) – For the HCR 102, Reset Device operation never completes – Resetting the HCR 102 unit using the 2nd reset option "Reset Device Settings and Delete files (Retains TCP/IP Settings)" will commence reset operation however activity icon will stay on screen and operation does not complete, requiring user to force close PCS application. This issue has been resolved.

Fixed Issue (originated in v4.2.0) – For the HCR 102, Match Output feature does not work for VGA input – Under the EDID Minder tab, attempting to match the output resolution to input 2 VGA using the Match Output button causes an error. This issue has been resolved.

**SOFTWARE RELEASE HISTORY**

Released Version: 4.3.2**Affects:****Engineering Revision:****Software Revision:** 4.3.1**Date:** August 15, 2018

The following is a list of changes and fixes in this release.

Added Feature – Added support for IN1804 Four Input Seamless Scaling Switcher Series (60-1699-01, 60-1699-02, 60-1699-03) – The IN1804 Seamless Scaling Switcher series is now supported in PCS.



SOFTWARE RELEASE HISTORY

Released Version: 4.3.1**Affects:****Engineering Revision:****Software Revision: 4.3.0****Date: July 9, 2018**

The following is a list of changes and fixes in this release.

Added Feature – Added support for the SW6 HD 4K PLUS and SW8 HD 4K PLUS (60-1605-01, 60-1606-01) – The SW6 HD 4K PLUS and SW8 HD 4K PLUS are now supported in PCS.

Added Feature – VLR 302 Feedback Suppressor – The VLR 302 feedback suppressor option is now available on the VLR 302 device module as well as on the VLR 302 Config page in the PVS 407D device module. This feature activates signal processing to automatically suppress audio feedback. Default is disabled. The VLR 302 must have firmware version 1.01 or above otherwise the feedback suppressor option will be grayed out.

Added Feature – HCR 102 Auto Switch Time-out can be disabled – The HCR 102 Auto Switch time-out duration can be disabled by unchecking the feature box. This allows the HC 400 system to stay on a manually selected input even when there is no source present.

Removed Feature – DXP HD 4K PLUS output format “HDMI YUV 4.2.0 Limited” option – DXP HD 4K PLUS does not support conversion to 4.2.0 color space so the “HDMI YUV 4.2.0 Limited” option was removed.



SOFTWARE RELEASE HISTORY

Released Version: 4.3.0

Affects:

Engineering Revision:

Software Revision: 4.2.2

Date: April 16, 2018

The following is a list of changes and fixes in this release.

Added Feature – Globalization – PCS now supports Spanish, Simplified Chinese, Japanese, German, and French languages. Labels, buttons, and messages are translated to the supported languages. Help files and information coming from the device is not translated.

Added Feature – Added support for HC 403 Meeting Space Collaboration System (42-271-01, 42-271-02) – The HC 403 Meeting Space Collaboration System consists of the HCR 102 receiver and the HCT 102 D transmitter.

Added Feature – Allow restore configuration on IN1608 devices that do not have matching part numbers – PCS now allows a configuration file to be restored to an IN1608 device (60-1238-xx) without requiring an exact part number match from the original configuration.

Added Feature –Batch firmware updates available across all DVS 605 models – Firmware updates to DVS 605 (60-1059-0x) products can now be deployed using the “Update Firmware to Multiple Devices” function.

Added Feature –User definable “HDCP Logo” available for the MediaPort 200 (FW 1.05+) – Added the ability for the user to upload an image to be displayed on the USB streaming video output when an HDCP encrypted signal is detected on the input.

Added Feature –New “Logo Config” tab available for the MediaPort 200 – A new “Logo Config” tab, which is like the one in the DSC HD-HD 4K module, has been added to allow the user to configure the user definable “No Signal” and “HDCP” logos.

Fixed Issue (originated in v4.2.0) – For the PVS 405D – EDID assignment text and labeling are not displayed properly on the Input Configuration page when in offline configuration or connected live to a PVS 405D unit. This issue has been resolved.

Fixed Issue (originated in v4.1.0) – For the USB Plus Matrix Controller – Refreshing the matrix intermittently causes PCS to freeze. This issue has been resolved.



Fixed Issue (originated in v4.1.0) – For the HCR 102, Total Pixel minimum/maximum values are not displayed – The Total Pixel minimum/maximum values located in the Picture Config tab never displayed a value. This issue has been resolved.

Fixed Issue (originated in v4.2.1) – Corrected missing text on column output resolutions on the DSC HD-HD 4K PLUS A xi – 3840x2160 and 4096x2160 column output resolutions did not include the identifying term “column” in the output resolution drop-down menu. This issue has been resolved.

Fixed Issue (originated in v4.2.1) – Corrected intermittent application error when connecting to a DSC HD-HD 4K family products – The PCS application could encounter an unhandled exception when first connecting to the DSC HD-HD 4K family of products. This issue has been resolved.

Fixed Issue (originated in v3.1.2) – Addressed application crash when updating firmware to an IN1606 or IN1608 with a password – The PCS application could encounter an unhandled exception when updating firmware to an IN1606 or IN1608 which has an ‘admin’ password set. This issue has been resolved.

Fixed Issue (originated in v3.0) – Corrected intermittent issue of displaying incorrect output HDCP status on the DVS 605 after a hot plug – After a hot plug of the HDMI output cable of a DVS 605 PCS would occasionally indicate that a HDCP compliant sink did not support HDCP. This issue has been resolved.

Fixed Issue (originated in v3.0) – Corrected PCS reconnect issue when disabling DHCP on a DVS 605 – Disabling DHCP on a connected DVS 605 could result in a state where PCS could become stuck with an indefinite “Reconnecting...” message. This issue has been resolved.

Fixed Issue (originated in v3.0) – Addressed issue on DVS 605 module that could lead to incorrect or blank output resolution / refresh fields – When connecting to a DVS 605 device the output resolution and/or refresh rate fields would occasionally flash, display the wrong data, or appear as empty. This issue has been resolved.



SOFTWARE RELEASE HISTORY

Released Version: 4.2.2**Affects:****Engineering Revision:****Software Revision: 4.2.1****Date: March 13, 2018**

The following is a list of changes and fixes in this release.

Added Feature – Added support for the DXP HD 4K PLUS Series (60-1493-21, 60-1494-21, 60-1495-21) – The DXP **44/84/88** HD 4K PLUS are now supported.



SOFTWARE RELEASE HISTORY

Released Version: 4.2.1**Affects:****Engineering Revision:****Software Revision: 4.2.0****Date: January 31, 2018**

The following is a list of changes and fixes in this release.

Added Feature – Added support for the HDP 101 4K (60-1739-01) – The HDP 101 4K HDMI to DisplayPort converter is now supported.

Added Feature –Batch firmware updates available across all IN1606 and IN1608 models – Firmware updates to IN1606 (60-1081-01) and IN1608 (60-1238-xx) products can now be deployed using the “Update Firmware to Multiple Devices” function.

Fixed Issue (originated in v4.2.1) – For DTP T HD2 4K Series – Assigning EDID to the DTP T HD2 4K HD Series fails. This is resolved by updating DTP T HD2 4K Series firmware. Please refer to DTP T HD2 4K firmware release notes for details.

Fixed Issue (originated in v4.1.0) – For the DTP SW4 HD 4K – Contact/Tally Mode setting showed incorrect mode status. This issue has been resolved.

Fixed Issue (originated in v4.1.0) – For the DTP SW4 HD 4K – Unable to disable Executive Mode when enabled via PCS. This issue has been resolved.

Fixed Issue (originated in v4.0.0) – DTP/HDBT status does not update for the DTP T SW4 HD 4K – The DTP/HDBT status does not update when DIP switch is toggled. This issue has been resolved.

Fixed Issue (originated in v4.0.6) – EDID assignment is not working properly for the DTP T DSW 4K –EDID assignment is not working properly when, upon connection, the inputs are assigned to factory EDID slots within the unit’s internal EDID table (this includes the default state). This issue has been resolved.

Fixed Issue (originated in v3.3.0) – For the USB Extender Plus Series the receiver configuration showed Peripheral Option - The configuration for USB Extender Plus R shows option to enable or disable peripheral emulation, however this feature can only be toggled on the USB Extender Plus Transmitter. This issue has been resolved.

Fixed Issue (originated in v4.0.0) – For the USB Plus Matrix Controller, a controller does not always reflect that it contains necessary factory-installed software to be a USB Plus Matrix Controller – There is an intermittent issue where the selected controller reflects that it does not have the necessary factory-installed software to be a USB Plus Matrix Controller. When new network



addresses are assigned to the USB Matrix Controller via Toolbelt, the USB Matrix program/software is stopped. A Reboot or Power Cycle in Toolbelt's System Utilities is required to restart the USB Matrix program/software. This issue has been resolved.

Fixed Issue (originated in v4.2.0) – For the DA HD 4K Series (non-plus), assigning EDID caused PCS to crash – Assigning EDID to the DA HD 4K Series distribution amplifiers caused PCS to crash. This issue has been resolved.

Fixed Issue (originated in v4.2.0) – For the DTP T HD2 4K Series, assigning EDID caused PCS to crash – Assigning EDID to the DTP T 4K Series caused PCS to crash. This issue has been resolved.

Fixed Issue (originated in v4.2.0) – For the HAE 100 4K / HAI 100 4K / DTP T USW Series, custom EDID not appearing in available EDID section – When adding custom EDID to the library, it would be added to the downloads folder, but would not appear in the available EDID section. This issue has been resolved.

Fixed Issue (originated in v4.2.0) – For the HAE 100 4K / HAI 100 4K / DTP T USW Series, cannot save 4K output EDID to library or favorites – When the native rate of the connected output exceeded 2K, PCS would prevent it from being added to the library or favorites section. This issue has been resolved.

Fixed Issue (originated in v4.0.0) – For the HAE 100 4K / HAI 100 4K, 4K EDID not appearing in available EDID section – All compatible EDID above 2K was missing from the available EDID section. This issue has been resolved.

Fixed Issue (originated in v4.1.0) – For the IN1606 and IN1608, detected audio format would not always show the current state – Real time changes in input audio settings, such as breakaway or input format changes could cause the detected format displayed in the Audio Configuration pages to get out of sync and display old information. This issue has been resolved.

Fixed Issue (originated in v4.1.0) – For the IN1606 and IN1608, unsupported setting in Screen Saver Custom Color Advanced Control – The Advanced Control for the Custom Screen Saver color included a fader for an alpha channel, which is not supported. This function has been removed.

Fixed Issue (originated in v4.1.0) – For the IN1606 and IN1608, Help File for Audio Configuration page missing – The Help File for the Audio Configuration page was missing in the previous release of PCS. This issue has been resolved.

Fixed Issue (originated in v4.1.0) – For the IN1606 and IN1608, signal Sampling data in the Image Setting page may display old data – Image Setting Min/Max range limits would retain old data when the input signal was removed. This issue has been resolved.



Fixed Issue (originated in v4.1.0) – For the IN1606 and IN1608, RS-232 insertion settings displayed invalid baud rates selections – RS-232 baud rate options for ethernet insertion displayed unsupported rates. It has been limited to the following supported rates: 9600, 19200, 38400, 115200. This issue has been resolved.

Fixed Issue (originated in v3.1.0) – For the IN1606 and IN1608, Input Preset recall was not allowed over varying input signal types – Input Presets were being restricted to only recall on identical input signal types. This issue has been resolved.

Fixed Issue (originated in v4.0.0) – For the IN1606 and IN1608, some Group Masters not showing default members after a product reset – Output Volume Group Masters default members were not being displayed in software after resetting the scaler. This issue has been resolved.

Fixed Issue (originated in v4.0.0) – For the IN1606 and IN1608, passwords were being limited to 12 characters – User and Admin passwords were being limited to 12 characters max. This issue has been resolved.

Fixed Issue (originated in v4.0.0) – For the IN1606 and IN1608, user Interface appeared to deselect an input – In AV Controls, clicking in the currently selected input would deselect it in software and appear as if no input was selected. This issue has been resolved.

Fixed Issue (originated in v4.2.0) – For the HCR 102, unit ceased function after PCS connection – Connecting to HCR 102 caused PCS configuration to always become non-functional. The HCR 102 hardware also exhibited slow input switching and OSD menu operation. This issue has been resolved.

Fixed Issue (originated in v4.1.0) – For the HCR 102, the “Requesting Data” screen showed twice – The PCS connection screen “Requesting Data” always showed a second time approximately 10 seconds after initial successful connection. This issue has been resolved.

Fixed Issue (originated in v4.1.0) – For the HCR 102, the receiver firmware number was truncated – The receiver firmware version number in Hardware Settings was missing the build number. This issue has been resolved.

Fixed Issue (originated in v4.1.0) – For the HCR 102, long device name was truncated – The receiver device name field under Hardware Settings was not showing entire name if it exceeded 24 characters. This issue has been resolved.

Fixed Issue (originated in v4.1.0) – For the HCR 102, cannot connect via Recent Devices submenu – A secure connection was not supported via the Recent Devices submenu. This issue has been resolved.



SOFTWARE RELEASE HISTORY

Released Version: 4.2.0**Affects:****Engineering Revision:****Software Revision:** 4.1.0**Date:** December 14, 2017

The following is a list of changes and fixes in this release.

Added Feature – Device Discovery to Mass Actions – Device Discovery is now automatically engaged when updating firmware or sending configurations to multiple devices. Device Discovery will run when the Mass Action window first opens and the target device list will populate with compatible devices.

Added Feature – Added support for DA HD 4K PLUS Series (60-1607-01, 60-1608-01, 60-1609-01) – The DA HD 4K PLUS Series 4K/60 @ 4:4:4 HDMI distribution amplifiers are now supported.

Added Feature – Added support for SW2/4 HD 4K PLUS (60-1603-01, 60-1604-01) – The SW2/4 HD 4K PLUS 4K/60 @ 4:4:4 HDMI switchers are now supported.

Added Feature – Custom resolution groups available for MediaPort 200 (firmware v1.04+) – Added the ability to create three customizable USB resolution groups, where each group contains a list of predefined resolutions. This feature helps to steer the streaming resolution selected by Unified Communications software (i.e. Skype, Zoom, FaceTime) to a desired resolution.

Added feature – PVS 407D system commissioning report enhancement – VoiceLift information has been added to the PVS 407D system commissioning report.

Added Feature – Improved support for PVS 407D – PVT HD RGB PoleVault wallplate (part# 60-1756-03) connected to the PVS 407D switcher running firmware version 4.00 or above is now supported in the PVS 407D device module.

Added Feature – Improved support for PVS 407D – The VGA input EDID has been changed to Extron 1290x1080 @ 60Hz for Offline Configuration.

Fixed Issue (originated in v4.1.0) – Incorrect playback volume in the PVS 407D system commissioning report – Incorrect audio playback volume level was included in the PVS 407D system commissioning report. This issue has been resolved.

Fixed Issue (originated in v4.1.0) – Connection to PVS 407D from Device Discovery – PCS may fail to connect to PVS 407D units running firmware version



4.00 that have both administrator and user passwords assigned via PCS' Device Discovery page. This issue has been resolved.



SOFTWARE RELEASE HISTORY

Released Version: 4.1.0**Affects:****Engineering Revision:****Software Revision: 4.0.6****Date: November 15, 2017**

The following is a list of changes and fixes in this release.

Added Feature – Added support for HC 404 Meeting Space Collaboration System (42-268-01) – The HC 404 Meeting Space Collaboration System consists of the HCR 102 receiver and the HCT 103 transmitter.

Added Feature – Added support for IN1608 “xi” models (60-1238-81/-82/-83/-85/-86) – Added support for the new IN1608 xi / IN1608 xi SA / IN1608 xi MA 70 / IN1608 xi SA IPCP / IN1608 xi MA 70 IPCP models. All models include a rear panel toggle switch allowing the user to choose between DTP and HDBT extended output modes, as well as RS-232 insertion over Ethernet.

Added Feature – Navigate to Communication Settings window from Hardware Settings – Users can now easily go to their communication settings from the Hardware Setting’s Unit Information view.

Added Feature – Custom screen saver color is now available for IN1606 and IN1608 – Users are now able to choose a custom screen saver color to be shown on the screen when there is no active input present. Firmware version 2.27 or greater is required on IN160x products for this feature to become enabled.

Added Feature – PVS 407D system commissioning report – Commissioning report is now available under the PVS 407D device’s dropdown menu.

Added Feature – Improve support for PVS 407D – When the Pass-Thru connection type option is selected for the mass configuration deployment, PCS will inform the user that audio files will not be pushed.

Added Feature – Image files stored on the DSC HD-HD 4K family are now included in the EXTZ backup file – Logo images saved in the DSC HD-HD 4K family are now included in the unit configuration and can be restored on a like product.

Fixed Issue (originated in v2.0) – For the Annotator 300, default value indicator was not displayed – In the Image Settings section, default values were not being indicated by an asterisk “*”. This issue has been resolved.



Fixed Issue (originated in v1.1.1) – For the DSC products, default value indicator was not displayed – In the Image Settings section, default values were not being indicated by an asterisk “*”. This issue has been resolved.

Fixed Issue (originated in v3.5.6) – AV Control Panel for the DVS 605 may incorrectly state “No Display” with a connected HDMI sink - Upon initial connection, or after an output hot plug the AV Control Panel could incorrectly state “No Display” even when a valid HDMI sink device was present. This issue has been resolved.

Fixed Issue (originated in v1.2) – IN1606 and IN1608 product IP address settings not updated when disabling DHCP mode – If DHCP mode was disabled and a new IP address was entered, the subnet mask and gateway were not updated despite default values being present in the dialog box when Apply was pressed. This issue has been resolved.

Fixed Issue (originated in v1.6) – For the MediaPort 200, passwords were limited to 12 characters – Passwords set in PCS were incorrectly limited to 12 characters, instead of 128 characters. This issue has been resolved.

Fixed Issue (originated in v1.6) – For the MediaPort 200, User Password entry field may be grayed out – With an Admin Password set, the User Password entry field may be grayed out when the MediaPort module was opened. This issue has been resolved.

Fixed Issue (originated in v1.6) – For the MediaPort 200, the full audio level range for the HDMI In and analog Line In was inaccessible when using the up/down arrows controls. – The up & down audio level controls were limited, and did not allow use of the full audio level range, for the HDMI In and analog Line In audio signals. This issue has been resolved.

Fixed Issue (originated in v4.0) – For the USB Extender Plus, vertical scroll bar does not scroll properly on grid – While scrolling vertically through the list of transmitters, the matrix grid is not aligned when the window is small. Keeping the window maximized will remedy the alignment. This issue has been resolved.

Fixed Issue (originated in v4.0) – For the USB Plus Matrix Controller, an intermittent unhandled exception is reported – When saving a USB Plus Matrix Controller configuration that has been selected from Device Discovery, PCS will report an unhandled exception and close. Issue does not occur when saving configuration while extenders and USB Plus Controller are being configured. This issue has been resolved.

Fixed Issue (originated in v4.0) – For the USB Plus Matrix Controller, the Verify page will intermittently have missing USB Extender Plus – Some to all USB Extender Plus that are configured may not show up on the Verify page. The workaround to verify whether a USB Plus Matrix Controller has been configured with



USB Extender Plus is to use a third party SFTP software to extract the controller's CSV file. This issue has been resolved.

Fixed Issue (originated in v4.0) – For the MediaPort 200, USB Name entry field incorrectly blocked some valid characters – The USB Name entry field incorrectly blocked the valid characters "a, g, l, m, p, & t". This issue has been resolved.



SOFTWARE RELEASE HISTORY

Released Version: 4.0.6**Affects:****Engineering Revision:****Software Revision:** 4.0.5**Date:** September 18, 2017

The following is a list of changes and fixes in this release.

Added Feature – Added support for DTP CrossPoint 4K Series with AV LAN –

The DTP CrossPoint 4K series with AV LAN is now supported.

Added Feature – Added support for DTP T UWP 4K 232/332 D –

The DTP T UWP 4K 232 and DTP T UWP 4K 332 D are now supported.

**SOFTWARE RELEASE HISTORY**

Released Version: 4.0.5**Affects:****Engineering Revision:****Software Revision:** 4.0.4**Date:** August 15, 2017

The following is a list of changes and fixes in this release.

Added Feature – Added support for SW6 HD 4K/ SW8 HD 4K – The SW6 HD 4K and SW8 HD 4K HDMI switchers are now supported.



SOFTWARE RELEASE HISTORY

Released Version: 4.0.4**Affects:****Engineering Revision:****Software Revision: 4.0.3****Date: August 3, 2017**

The following is a list of changes and fixes in this release.

Improved Feature – Improved support for PVS 407D – VLR 302 VoiceLift Pro Receiver can now be configured on the VLR 302 Config page in the PVS 407D device module.

Fixed Issue (originated in v4.0.3) – Incorrect VLR 302 device reset dialog – Incorrect VLR 302 device reset confirmation dialog when trying to reset the VLR 302 via USB connection. This issue has been resolved.



SOFTWARE RELEASE HISTORY

Released Version: 4.0.3**Affects:****Engineering Revision:****Software Revision:** 4.0.2**Date:** June 19, 2017

The following is a list of changes and fixes in this release.

Added Feature – Added support for VLR 302 – The VLR 302 VoiceLift Pro Receiver is now supported.

Added Feature – Improved support for PVS 407D – When connecting to a PVS 407D, the connected VoiceLift receiver part number and firmware version will be displayed on the Unit Information page under Hardware Settings.

Added Feature – Improved support for PVS 407D – System Reboot option is added to the Unit Information page under Hardware Settings.

Added Feature – Improved support for PVS 407D – The digital HDMI input EDID has been changed to 1080p @ 60Hz for Offline Configuration.



SOFTWARE RELEASE HISTORY

Released Version: 4.0.2**Affects:****Engineering Revision:****Software Revision: 4.0.1****Date: May 10, 2017**

The following is a list of changes and fixes in this release.

Fixed Issue (originated in v4.0.0) – For the DTP CrossPoint 4K Matrix switchers, the input configuration, output configuration, and scaler setting tabs will be greyed out when in offline configuration mode – While in offline configuration mode for the DTP CrossPoint 4K matrix switchers, the input, output, and scaler tabs are greyed out and will not allow the user to make any adjustment. This issue has been resolved.

Fixed Issue (originated in v3.5.6) – MediaPort 200 Mic/Line ducking target incorrectly labeled – When adjusting ducking targets for the Mic/Line input, the “USB Communications” target is incorrectly labeled as “Mic/Line.” This issue has been resolved.

Fixed Issue (originated in v3.5.6) – Deleting user uploaded logo files on the MediaPort 200 may result in a loss of communication – When deleting a user uploaded logo file from the MediaPort 200, PCS may unexpectedly disconnect from the device. This issue has been resolved.

Fixed Issue (originated in v3.5.6) – Disconnecting and reconnecting to a MediaPort 200 may result in disabled audio meters – When PCS is disconnected and reconnected to a MediaPort 200 (e.g. after a configuration restore, unit reset, or firmware update) the audio meters may be incorrectly disabled. This issue has been resolved.

Fixed Issue (originated in v3.5.6) – Connecting to a MediaPort 200 via USB may result in incorrect audio values being displayed – When connecting to a MediaPort 200 via USB, some audio settings such as gain may not accurately reflect settings on the device. This issue has been resolved.

Fixed Issue (originated in v3.5.6) – Occasional issues adjusting audio DSP settings on the MediaPort 200 – Adjusting audio DSP values via text entry box or grab handles within graphs on the MediaPort 200 would occasionally update values incorrectly on the device. This issue has been resolved.

Fixed Issue (originated in v1.1.1) – For the DSC family, the Output HDCP status does not update – PCS does not update the output HDCP status in real time. This issue has been resolved.



Fixed Issue (originated in v3.5.1) – For the DSC family, the Size and Position graphic appears outside the window – The image representing the size and position of the active video does not accurately display the set size and position. This issue has been resolved.

Fixed Issue (originated in v3.5.1) – For the DSC family, the Output Resolution and/or Refresh Rate settings appear as blank – The drop-down menu for the output resolution and/or output refresh rate setting are occasionally blank. This issue has been resolved.

Fixed Issue (originated in v3.5.1) – For the DSC family, PCS takes 40-50 seconds to update settings after a reset – After resetting the device to factory defaults, it takes PCS 40-50 seconds to reflect the current, default state of the DSC scaler. This issue has been resolved.

Fixed Issue (originated in v1.1.1) – For the DSC 301 HD, PCS shows incorrect total pixel values for input 2 – With active video to both inputs 2 and 3, PCS displays incorrect total pixel values when switching to input 2. This issue has been resolved.

Fixed Issue (originated in v3.4.1) – For DSC 301 HD, the Auto Switch setting defaults to “Low to High” – After launching PCS and connecting to a DSC 301 HD, if the Auto Switch command was set to “High to Low”, it would change to “Low to High.” This issue has been resolved.



SOFTWARE RELEASE HISTORY

Released Version: 4.0.1**Affects:****Engineering Revision:****Software Revision: 4.0.0****Date: April 3, 2017**

The following is a list of changes and fixes in this release.

Added Feature – Added support for DTP T SW4 HD 4K– The DTP T SW4 HD 4K is now supported.

Fixed Issue (originated in v4.0) – USB Device update is unable to download the latest drivers for the Annotator 300 – When the “Check for Updates” button is selected on the USB Device list, there are no drivers downloaded from the Extron web server. This issue has been fixed.



SOFTWARE RELEASE HISTORY

Released Version: 4.0

Affects:

Engineering Revision:

Software Revision: 3.5.6

Date: December 14, 2016

The following is a list of changes and fixes in this release.

Added Feature – Easy Access to Recently Configured Devices – Added option to select up to five recently configured devices under the main dropdown menu.

Added Feature – Added support for USB Plus Matrix Controller – The USB Plus Matrix Controller is now supported.

Added Feature – Improved support for PVS 407D – When connecting to a PVS 407D, the connected PVT wallplate part numbers will be displayed on the Unit Information page under Hardware Settings.

Added Feature – Improved support for PVS 407D – When an old PVS 405D's PVT wallplate is connected to the PVS 407D, the user will be informed of an incorrect wallplate with a "Not Compatible" warning under Firmware Version. The Firmware Version information is on the Unit Information page under Hardware Settings.

Added Feature – Improved support for PVS 407D – When connecting to a PVS 407D with firmware version 2.00 or above, the PVT LINK Status will be displayed on the Unit Information page under Hardware Settings.

Added Feature – Improved support for PVS 407D – When the user selects the Connect and Apply option or the Deploy Configurations to Device(s) option under the drop-down menu, the Deploy options for the PVS 407D have been removed for the MLC Pass-thru connection.

Added Feature – Improved support for PVS 407D – User must select the Connection Types of either Ethernet or Pass-Thru (via MLC) when selecting the Deploy Configuration to Devices option under the drop-down menu.

Added Feature – Improved support for DSC 301 HD– When Auto Switch has been enabled on the DSC 301 HD, input selection buttons are now disabled.

Added Feature – Improved support for DVS 605 – When IN1/IN2 are set for Composite, S-Video, YUV Auto, or RGBcvS, EDID Minder now blocks EDID assignments on the DVS 605.



Added Feature – Improved support for DTP CrossPoint – When the DTP CrossPoint detects a hardware issue, the input configuration, output configuration, and the scaler settings will be greyed out.

Fixed Issue (originated in v3.4.0) – H/V start, Active Lines, and Active Pixels values are always displayed as “N/A” on the digital inputs of the Annotator 300 – When viewing the Image Settings for input 2 or 3 of the Annotator 300, the signal sampling values always displayed as “N/A”. This issue has been fixed.

Fixed Issue (originated in v3.5.6) – Unit time does not match time of PC after Sync to PC setting is applied for Annotator 300 – When updating the Date and Time by syncing to the connected PC, the Annotator Unit time would not match the PC. This issue has been fixed.

Fixed Issue (originated in v3.5.6) – The files selected on the Annotation setting tables are not highlighted when selected on the Annotator 300 – When user selects a file from the Installed USB Devices, Font Selection, or Internal Memory tables on the Annotation Settings tab there’s no indication that a file has been selected. This issue has been fixed.

Fixed Issue (originated in v3.5.6) – Screen saver user logos do not work correctly with the DTP CrossPoint 4K matrix switchers – When trying to enable the user image logo for the screen saver feature, PCS does not execute the commands correctly, causing a black screen to appear. This issue has been fixed.

Fixed Issue (originated in v3.5.6) – Connected Output EDID is not displayed correctly for DTP HD DA 4K Series, DA HD 4K Series, EDID 101H 4K, HAI 101 4K, and HAE 101 4K – When viewing the Connected Outputs under the EDID Minder Tab, EDID displays as “N/A” or is missing completely. This issue has been fixed.

Fixed Issue (originated in v3.5.3) – DXP HD 4K matrix module: PCS crashes when configuring Audio under Input Configuration, Output Configuration, or Ties and Presets – When connecting to DXP HD 4K matrix, configuring Audio under Input Configuration, Output Configuration, or Ties and Presets will intermittently crash PCS. This issue has been fixed.

Fixed Issue (originated in v3.5.6) – DXP HD 4K matrix module: TCP/IP tab’s IP address drop-down not displaying previously entered IP – When connecting to a DXP HD 4K matrix, a previously entered IP address is not saved. This issue has been fixed.

Fixed Issue (originated in v3.5.6) – DXP HD 4K matrix module: Missing some available EDID (4K) in the EDID minder section – When connecting to DXP matrix, some of the available EDIDs are missing. This issue has been fixed.



Fixed issue (originated in v2.2.0) – IN1604 correct audio and video format – IN1604 may show “N/A” for EDID audio and video formats when custom EDID had been selected. This issue has been fixed.

Fixed issue (originated in v3.2.0) – DSC 301 HD and IN1604 firmware update messaging – DSC 301 HD and IN1604 could incorrectly display an “Update firmware failed” message after a successful firmware update. This issue has been fixed.

Fixed issue (originated in v3.4.0) – DSC HD-HD drop-down menu display correct values – The output resolution and refresh rate drop-down menus could appear blank upon the initial connection to a DSC HD-HD. This issue has been fixed.

Fixed issue (originated in v3.4.0) – DSC 301 HD window size corrected – The window size and position controls may not update after switching to a new input on the DSC 301 HD. This issue has been fixed.

Fixed issue (originated in v3.0.0) – DSC output resolutions matched – The output resolution listed in the A/V Control Panel may not match the unit’s set output resolution and refresh rate on the DSC HD-HD and DSC 301 HD. This issue has been fixed.

Fixed issue (originated in v4.0.0) – DSC HD-HD display correct value after output resolution change – The HDCP status / capabilities of a connected sink device may show an incorrect value after an output resolution change on the DSC HD-HD. This issue has been fixed.

Fixed issue (originated in v3.5.2) – DSC HD-HD 4K detected audio input format updated – The detected audio input format may not update to a real-time format change on the DSC HD-HD 4K series. This issue has been fixed.

Fixed issue (originated in v3.5.4) – DSC HD-HD 4K reflects change in input signal encryption – HDCP input status may not update real-time to a change in input signal encryption status on the DSC HD-HD 4K series. This issue has been fixed.

Fixed issue (originated in v3.5.1) – DSC HD-HD 4K backup/restore via USB improvements – When connected via USB backup/restore or firmware updates may not succeed on the DSC HD-HD 4K series. This issue has been fixed.

Fixed issue (originated in v3.5.6) – DVS 605 crashes PCS on connecting/disconnecting from unit – PCS may throw an exception / crash when connecting to or disconnecting from a DVS 605. This issue has been fixed.



Fixed issue (originated in v3.4) – IN1606/IN1608 newly connected sink reflects correct EDID info and HDCP capabilities – Display EDID info and HDCP capabilities may not update real-time when a new sink is connected to an IN1606 / IN1608. This issue has been fixed.

Fixed issue (originated in v3.5.6) – IN1606 / IN1608 audio mute status not updated in real-time - Status of audio mutes may not update when muted or unmuted externally to PCS (e.g. via SIS) on the IN1606 / IN1608. This issue has been fixed.



SOFTWARE RELEASE HISTORY

Released Version: 3.5.6**Affects:****Engineering Revision:****Software Revision: 3.5.5****Date: October 12, 2016**

The following is a list of changes and fixes in this release.

Added Feature – Improved support for MediaPort 200 – Controls to specify the “USB Name” and “USB Output – Resolution Group” have been added.

Added Feature – Improved support for MediaPort 200 – Two new streaming formats, “MJPEG 422 Limited” & “MJPEG 420 Limited”, have been added to the “USB Output – Format” control.

Added Feature – Improved support for MediaPort 200 – Updated USB Communication and USB Playback audio routing controls on the “Audio Configuration – Mix” tab.

Fixed Issue (originated in v3.5.5) – USB Communications audio routing would change when a 2nd MediaPort 200 was connected – Connecting to a 2nd MediaPort 200 would change the USB Communications audio routing on the 1st connected MediaPort 200. This issue has been fixed.

Fixed Issue (originated in v3.5.5) – Removed 2K EDID’s for MediaPort 200 – 2K EDID’s have been removed from the “EDID Minder” page since 2K inputs are not supported by the MediaPort 200. This issue has been fixed.

Fixed Issue (originated in v3.5.0) - Saved PVS 405D configuration file shows default switcher settings – When saving and opening a PVS 405D configuration file in offline mode, all the switcher settings are shown as default. This issue has been fixed.



SOFTWARE RELEASE HISTORY

Released Version: 3.5.5**Affects:****Engineering Revision:****Software Revision: 3.5.4****Date: October 3, 2016**

The following is a list of changes and fixes in this release.

Added Feature – Added support for DSC HD-HD 4K A – The DSC HD-HD 4K A is now supported.

Added Feature – Improved support for IN Family – An Output Volume group master level control has been added.

Added Feature – Improved support for IN Family – A new “custom” Screen Saver color option has been added (IN1606/08 firmware v2.30.0001+ required)

Added Feature – Improved support for IN Family – A new Output Encryption mode “None” has been added (IN1606/08 firmware v2.30.0001+ required)



SOFTWARE RELEASE HISTORY

Released Version: 3.5.4**Affects:****Engineering Revision:****Software Revision: 3.5.3****Date: August 8, 2016**

The following is a list of changes and fixes in this release.

Added Feature – Added support for DA4 HD 4K – The DA4 HD 4K is now supported.

Added Feature – Added support for DA6 HD 4K – The DA6 HD 4K is now supported.

Added Feature – Updated PVS 407D EDID table to support 4K – The PVS 407D now supports 4K video resolutions.

Added Feature – Improved support for HDCP for PVS 407D - The HDCP Authorized checkbox will be grayed out for inputs 2 and 4 RGB video format when they are RGB.

Added Feature – Improved support for DTP CrossPoint Family – Saving logo settings to a file and pushing them to a DTP CrossPoint is now supported.

**SOFTWARE RELEASE HISTORY**

Released Version: 3.5.3**Affects:****Engineering Revision:****Software Revision:** 3.5.2**Date:** July 22, 2016

The following is a list of changes and fixes in this release.

Added Feature – Added support for PowerCage 401 – The PowerCage 401 is now supported.

Added Feature – Added support for DVC RGB-HD A – The DVC RGB-HD A is now supported.



SOFTWARE RELEASE HISTORY

Released Version: 3.5.2**Affects:****Engineering Revision:****Software Revision:** 3.5.1**Date:** June 26, 2016

The following is a list of changes and fixes in this release.

Added Feature – Added support for DSC HD-HD 4K Plus A – The DSC HD-HD 4K Plus A is now supported.

Added Feature – Added support for DSC HD-HD 4K Plus A xi – The DSC HD-HD 4K Plus A xi is now supported.

Added Feature – Updated EDID table to support 4K – The MPS 601 now supports 4K video resolutions.



SOFTWARE RELEASE HISTORY

Released Version: 3.5.1**Affects:****Engineering Revision:****Software Revision: 3.5.0****Date: April 12, 2016**

The following is a list of changes and fixes in this release.

Added Feature – Added support for EDID 101H 4K – The EDID 101H 4K is now supported.

Added Feature – Support for SW2 HD 4K – The SW2 HD 4K is now supported.

Added Feature – Support for SW4 HD 4K – The SW4 HD 4K is now supported.

Added Feature – Support for HAI 100 4K – The HAI 100 4K is now supported.

Added Feature – Support for HAE 100 4K – The HAE 100 4K is now supported.

Fixed Issue (originated in v3.5.0) – Long pause during initial Pull/Connection with DSC HD-HD units – Config readout with PCS took up to 1 Minute. This issue has been resolved.

Fixed Issue (originated in v3.5.0) – PCS crashes when output resolution of the DSC 3G-3G/HD-3G A is changed – When output resolution is changed to 1080p or 2K, "Unhandled exception Error" message pops up. This issue has been resolved.

Fixed Issue (originated in v3.5.0) – Blank Resolution drop-down menu for DSC 3G-HD A – The resolution drop-down menu is blank when configuring DSC 3G-HD A units. This issue has been resolved.

Fixed Issue (originated in v3.5.0) – Output resolution is not displayed for IN1606/1608 – The output resolution is not visible when configuring IN1606 or IN1608 units. This issue has been resolved.

Fixed Issue (originated in v3.5.0) – HDMI EDID can be used with VGA inputs – PCS allows HDMI EDID to be used with VGA inputs on a device. This issue has been resolved.

Fixed Issue (originated in v3.5.0) – Logo appears in the incorrect slot for DTP CrossPoint Series products– dragging an image from memory next into the Logo Management section on the right into LOGO slot results in it being displayed in the wrong slot. This issue has been resolved.

SOFTWARE RELEASE HISTORY



Released Version: 3.5.0

Affects:

Engineering Revision:

Software Revision: 3.4

Date: January 14, 2016

The following is a list of changes and fixes in this release.

Added Feature – Support for PVS 407D – The PVS 407D is now supported.

Added Feature – Support for DTP T USW 233– The DTP T USW 233 is now supported.

Added Feature – Support for DTP T USW 333– The DTP T USW 333 is now supported.

Added Feature – Support for DTP CrossPoint 82/84 4K Series – The DTP CrossPoint 82/84 4K Series switchers are now supported.



SOFTWARE RELEASE HISTORY

Released Version: 3.4**Affects:****Engineering Revision:****Software Revision: 3.3.1****Date: Nov. 17, 2015**

The following is a list of changes and fixes in this release.

Added Feature – DTP CrossPoint 86 4K – The DTP CrossPoint 86 4K is now supported.

Added Feature – DTP CrossPoint 86 4K IPCP MA 70– The DTP CrossPoint 86 4K IPCP MA 70 is now supported.

Added Feature – DTP CrossPoint 86 4K IPCP SA – The DTP CrossPoint 86 4K IPCP SA is now supported.

Added Feature – DTP T DSW 4K 233/333 – The DTP T DSW 4K 233/333 are now supported.

Added Feature – DTP T EU 232/332 (w/AUDIO) – The DTP T EU 232/332 (w/AUDIO) are now supported.

Added Feature – DTP T FB 232/332 (w/AUDIO) – The DTP T FB 232 / 332 (w/AUDIO) are now supported.

Added Feature – DTP T MK 232/332 (w/AUDIO) – The DTP T MK 232/332 (w/AUDIO) are now supported.

Added Feature – DXP 44/84/88 HD 4K Series – The DXP 44/84/88 HD 4K are now supported.

SOFTWARE RELEASE HISTORY



Released Version: 3.3.1

Affects:

Engineering Revision:

Software Revision: 3.3.0

Date: October 26th, 2015

The following is a list of changes and fixes in this release.

Added Feature – DTP T DWP 4K 232 – The DTP T DWP 4K 232 is now supported.

Added Feature – DTP T DWP 4K 332 – The DTP T DWP 4K 332 is now supported.

Added Feature – DXP 168 HD 4K – The DXP 168 HD 4K is now supported.

Added Feature – DXP 1616HD 4K – The DXP 1616HD 4K is now supported.

Added Feature – DXP 1616HD 4K – The DXP 1616HD 4K is now supported.

Fixed Issue (originated in v3.3.0) Compromised compatibility with IN1606 / IN1608 (device reset issue): Previous setting values will be displayed if PCS 3.2.0.14 is used to reset IN1606 or IN1608 devices. Recommended workarounds include using PCS 3.2.0.327 from archives, or if 3.3.0.14 is installed, fully disconnecting and reconnecting to the IN1606 or IN1608 device after a reset.

SOFTWARE RELEASE HISTORY



Released Version: 3.3.0

Affects:

Engineering Revision:

Software Revision: 3.2.1

Date: October 28, 2015

The following is a list of changes and fixes in this release.

Added Feature – DA2 4K Support – The DA2 4K is now supported.

Added Feature – DTP T HD2 4K 230 Support – The DTP T HD2 4K 230 is now supported.

Added Feature – DTP T HD2 4K 330 Support – The DTP T HD2 4K 330 is now supported.

Added Feature – USB Extender Plus Series Support – The USB Extender Plus Series is now supported.

SOFTWARE RELEASE HISTORY

Released Version: 3.2.0

**Affects:****Engineering Revision:****Software Revision:** 3.1.2**Date:** March 11, 2015

The following is a list of changes and fixes in this release.

Added Support for Mass Firmware Update – Users now have the option to update firmware to an individual device or to multiple like devices

DTP CrossPoint 84 – Support added for backup/restore and Save/Deploy configuration file:

Save — Saves current configuration file to an existing saved file (.extc file) on the connected PC.

Save As — Saves current configuration file as a new file on the connected PC.

Deploy Configuration to Device(s) — Connect and deploys current configuration to multiple devices simultaneously.

Backup... — Allows the user to backup the current device configuration (as a .extz file) to a connected PC.

Restore... — Allows the user to restore a previously saved configuration file (a .extz file) from a PC to the connected device or to multiple devices.

DTP CrossPoint 84 – The “Download DSP Configurator” button In the DTP CrossPoint 84 tab now links the user to the Extron website for the DSP Configurator

SOFTWARE RELEASE HISTORY

Released Version: 3.0**Affects:****Engineering Revision:****Software Revision:** 2.2



Date: August 20, 2014

The following is a list of changes and fixes in this release.

Added Feature – DTP T EU 232 Support – The DTP T EU 232 is now supported.

Added Feature – DTP T EU 332 Support – The DTP T EU 332 is now supported.

Added Feature – DTP T MK 232 Support – The DTP T MK 232 is now supported.

Added Feature – DTP T MK 332 Support – The DTP T MK 332 is now supported.

Added Feature – DVS 605 – The DVS 605 is now supported.

Added Feature – Mass Deploy - The Mass Deploy feature allows the user to simultaneously deploy the current configuration to the PVS 405D switchers simultaneously over the network via the MLC pass-thru port. In addition it allows the user to save a list of added devices as a manifest file (.mfst extension). This manifest file can be imported for later use, eliminating the need to manually re-enter each device's details (IP, password and port settings). The user can connect to a device that is online, or open a new or saved configuration file and deploy the configuration to a single or multiple devices within a room or in group of rooms.

SOFTWARE RELEASE HISTORY

Released Version: 2.2

Affects:

Engineering Revision:

Software Revision: 2.1

Date: August 20, 2014



The following is a list of changes and fixes in this release.

Added Feature – DSC HD-HD Support – The DSC HD-HD is now supported.

Added Feature – DTP T FB 232 Support – The DTP T FB 232 is now supported.

Added Feature – DTP T FB 332 Support – The DTP T FB 332 is now supported.

Added Feature – IN1604 DTP Support – The IN1604 DTP is now supported.

Added Feature – IN1604 HD Support – The IN1604 HD is now supported.

Added Feature – Open configuration file support – The user will now be able to open a configuration file that has been previously saved to their computer.

Fixed Issue – Cannot connect to a password protected DTP CrossPoint 84(IPCP MA 70, IPCP SA) - When trying to connect to a DTP CrossPoint 84(IPCP MA 70, IPCP SA) that is password protected, via IP, a failed to connect error window will appear. This behavior is no longer seen in PCS 2.2

Fixed Issue – Cannot open a configuration file that is saved to computer – There is currently no option to open a saved configuration file that is located on the user's computer. An open configuration file feature has been added, as of PCS 2.2.

SOFTWARE RELEASE HISTORY

Released Version: 2.1

Affects:

Engineering Revision:

Software Revision: 2.0

Date: June 23, 2014

The following is a list of changes and fixes in this release.



Added Feature – Annotator 300 Support – The Annotator 300 is now supported.

Fixed Issue - Missing hostname label- When connecting to a device via Ethernet, either an IP Address or a Hostname can be used, even though the Extron Configuration Software labels this field as "IP Address." Connecting via Hostname requires the Extron product be set to DHCP mode and a network capable of DNS registration. This behavior has been fixed in PCS 2.1. User no longer has to set Extron product to DHCP in order to connect via hostname. Missing hostname label is now considered "as designed".

Fixed Issue - FOX II DP Connected outputs section on the EDID minder tab does not update - When a display is disconnected from the transmitter Loop-Thru output, the connected outputs section does not update to reflect no connected outputs. The connected outputs section will only update if you navigate to the Status tab and then navigate back to the EDID minder tab. Issue is no longer seen in PCS 2.1.

SOFTWARE RELEASE HISTORY

Released Version: 2.0

Affects:

Engineering Revision:

Software Revision: 1.4

Date: November 20, 2013

The following is a list of changes and fixes in this release.



Added Feature – DTP CrossPoint 84 IPCP MA 70/ DTP CrossPoint 84 IPCP SA – The DTP CrossPoint 84 IPCP MA 70/ DTP CrossPoint 84 IPCP SA is now supported.

Added Feature – DTP-T-HWP-232/332 – The DTP-T-HWP-232/332 is now supported.

Added Feature – DTP-T-USW-333 – The DTP-T-USW-333 is now supported.

Added Feature – DTP-T-UWP-232/332 – The DTP-T-UWP-232/332 is now supported.

Added Feature – IN1608 IPCP MA/ IN1608 IPCP SA – The IN1608 IPCP MA/ IN1608 IPCP SA is now supported.

Added Feature – Device Discovery Page– The Device Discovery Page has been added in order to allow users the option of viewing and connecting to PCS supported Extron devices (TCP/IP, USB), without having to enter the IP address manually.

Added Feature – Access to DSP Configurator – Users can launch DSP Configurator directly from the Audio Configuration tab.

Removed Feature – RS-232 Connectivity – User can no longer connect to a device through RS-232 (Excluding pass thru support for PVS 405D).

Removed Feature – Connect to password protected device with User password – Users can no longer connect to a password protected device with a User Password. In order to connect, the User must login with an Admin password.

Changed Feature – Location of Hardware/Communications Settings – The location of Hardware/Communications settings has been moved. In order to access these settings for a specific device, the User must click on the down arrow located on the device page tab, click on 'Settings', then select either 'Hardware Settings' or 'Communications Settings'.

Fixed Issue - Improved compatibility with non-English language settings in Microsoft Windows - Previous versions of PCS may not correctly implement periods vs. commas for decimal marks based on the set language in the Windows operating system. This behavior has been corrected in PCS v2.0.

SOFTWARE RELEASE HISTORY

Released Version: 2.0

Affects:

Engineering Revision:

Software Revision: 1.4

Date: November 20, 2013

The following is a list of changes and fixes in this release.

DSC Module

**Fixed Issue - Corrected errors encountered when updating firmware via PCS**

– Previous versions of PCS could encounter an error or failure during a product firmware update. This issue has been corrected in PCS 2.0.

Fixed Issue - Corrected issue where PCS always displayed HDCP Authorized as enabled upon first connect

– Previous versions of PCS would always display the “HDCP Authorized” setting as enabled when first connecting to a DSC 301 HD unit, regardless of the actual state of the setting on the unit. This issue has been corrected in PCS 2.0.

Added Feature – Added audio and video formats for Connected Display and custom EDID files – Connected Displays and custom EDID’s listed on the EDID Minder tab now indicate audio and video formats, to facilitate proper EDID set up and configuration.

Added Feature – Added ability to configure HDCP output mode (DSC 301 HD only) – PCS 2.0 now includes a “HDCP Mode” option on the General Settings tab, which allows for gives greater versatility for enhancing operation with various display devices.

IN1606 / IN1608 Module**Fixed Issue - Corrected issue where Group Masters display default**

membership upon first connect – Previous versions of PCS would display default audio Group Master membership upon first connect to an IN1606 or IN1608 unit, regardless of the configuration of the unit. This issue has been corrected in PCS 2.0

Added Feature – Added audio and video formats for Connected Display and custom EDID files – Connected Displays and custom EDID’s listed on the EDID Minder tab now indicate audio and video formats, to facilitate proper EDID set up and configuration.

Added Feature – Added ability to apply gain/attenuation to digital LPCM-2Ch audio inputs – PCS 2.0 includes the ability to set +24 to -18dB of audiogain/attenuation to analog or LPCM-2Ch audio inputs on the Line Input tab (under Audio Config). 3+Ch LPCM inputs and bitstream digital inputs will not be affected.

SOFTWARE RELEASE HISTORY

Released Version: 2.0**Affects:****Engineering Revision:****Software Revision: 1.4****Date: November 20, 2013**

The following is a list of changes and fixes in this release.

Added Feature – Added “Program Offsets” control to audio Mix Controls tab

– PCS 2.0 includes the ability to apply up to 12dB of Program Audio gain to



individual audio output groups. This control can be accessed on the Mix Controls tab (under Audio Config) by clicking on the icon to the right of the Program Volume audio fader.

Added Feature – Added ability to configure HDCP output mode – PCS 2.0 now includes a “HDCP Mode” option on the General Settings tab, which allows for gives greater versatility for enhancing operation with various display devices.

Added Feature – Added firmware version check, to ensure v2.09+ firmware is installed – PCS 2.0 performs a firmware version check upon first connect to an IN1606 / IN1608 unit. If the firmware is not at least v2.09, the user is directed to update unit firmware prior to proceeding. This check is performed due to a significant firmware update that was implemented with firmware v2.09 for these products.

SOFTWARE RELEASE HISTORY

Released Version: 1.4

Affects:

Engineering Revision:

Software Revision: 1.3

Date: November 20, 2013

The following is a list of changes and fixes in this release.

Added Feature – PVS 405D Support – The PVS 405D is now supported.

Added Feature – MPS 601 Support – The MPS 601 is now supported.



Added Feature – FOX II DP Support – The FOX II DP is now supported.

Fixed Issue (originated in 1.1.1) DSC 301 HD firmware will not load – When using PCS, the latest version of DSC 301 HD firmware will not load. As an alternative, the Extron Firmware Loader software can be used to upload the firmware.

SOFTWARE RELEASE HISTORY

Released Version: 1.3

Affects:

Engineering Revision:

Software Revision: 1.2

Date: October 18, 2013

The following is a list of changes and fixes in this release.

Added Feature - DTP T USW 233 Support – The DTP T USW 233 is now supported.



SOFTWARE RELEASE HISTORY

Released Version: 1.2

Affects:

Engineering Revision:

Software Revision: 1.1.1

Date: July 16, 2013

The following is a list of changes and fixes in this release.

Added Feature - DSC HD-3G A and DSC 3G-HD A Support – The DSC HD-3G A and DSC 3G-HD A are now supported.

Added Feature – MPS 602 Series – The MPS 602, MPS 602 SA, and MPS 602 MS are now supported.



(DSC 301 HD) Added Feature – ‘Lock Aspect Ratio’ option –Users now have the ability to lock the aspect ratio of the active input when adjusting image size by utilizing a checkbox within the ‘Size and Position’ tab.

(DSC 301 HD) Added Feature – HDCP Status indicators updated – New style HDCP Lock/Unlock symbols have been added to the AV Controls panel located within Input/Output Config tab to more clearly indicate HDCP status

(DSC 301 HD) Fixed Issue (originated in v1.0) DSC 301 HD Firmware Loader failure – When using the firmware loader, failure would occur immediately after beginning the loading process, resulting in an error message. Issue has been resolved.

(DSC 301 HD) Fixed Issue (originated in v1.0) DSC 301 HD “Adjust Graphically” image sized incorrectly – ‘Size and Position’ tab would not correctly update after an Auto-Image was performed. Issue has been resolved.

(DSC 301 HD) Fixed Issue (originated in v1.0) DSC 301 HD EDID transfer incomplete – Non-standard rates assigned to input EDID failed to properly transfer from PCS to the DSC 301 HD. Issue has been resolved.

(DSC 301 HD) Fixed Issue (originated in v1.0) DSC 301 HD Preset names – After system reset, preset names incorrectly remained at their previous value, and did not clear back to default. Issue has been resolved.

(DSC 301 HD) Fixed Issue (originated in v1.0) DSC 301 HD Refresh Rate – Output resolution shown in AV Control Panel did not include refresh rate when using custom output rate slots. Issue has been resolved.

(DSC 301 HD) Fixed Issue (originated in v1.0) DSC 301 HD Image Settings fail to update properly – Signal Sampling within the Image Settings tab failed to update properly when a new input rate was applied to the scaler, or could display erroneous data. Issue has been resolved.



SOFTWARE RELEASE HISTORY

Released Version: 1.1.1

Affects:

Engineering Revision:

Software Revision: 1.1

Date: July 16, 2013

The following is a list of changes and fixes in this release.

(DSC 301 HD) Fixed Issue (originated in v1.0) DSC 301 HD timeout value changes –When the timeout value was not set to 60, the numeric value of the timeout would change arbitrarily. Issue has been resolved.

(DSC 301 HD) Fixed Issue (originated in v1.0) – DSC 301 HD product photo and device description are missing – DSC 301 HD photo and description have been added to the software. Issue has been resolved.



SOFTWARE RELEASE HISTORY

Released Version: 1.1

Affects:

Engineering Revision:

Software Revision: 1.0

Date: April 17, 2013

The following is a list of changes and fixes in this release.

Added Feature – IN1608 Series Support – The IN1608, IN1608 MA and IN1608 SA are now supported.

Added Feature – HDMI DA Series Support – The HDMI DA4 and HDMI DA6 are now supported.

Added Feature – SW HDMI Series Support – The SW2 HDMI, SW4 HDMI, SW6 HDMI and SW8 HDMI are now supported.

(IN1606) Added Feature - Added audio group master configuration - Group configuration controls allow the user to affect multiple audio parameters



simultaneously, as well as control which audio parameters are affected by the volume control knob on the front of the unit. These controls can be accessed by clicking the 'Configure Groups' button within the 'Audio' – 'Mix Controls' tab (Note: firmware v2.01+ required).

(IN1606) Added Feature - Audio duck targets for Out 1 / Out 2 are now separate – Analog audio Out 1 and Out 2 have been separated into uniquely selectable items within PCS to establish greater configuration flexibility, and are now able to be set independently for audio ducking purposes.

(IN1606) Added Feature - Support for auto switching – The option to enable and configure auto switching has been added under the 'Device Settings' tab (Note: firmware v2.01+ required).

(IN1606) Fixed Issue (originated in v1.0) Device configuration restore errors – Fixed problems restoring configurations with new IN1606 units, or initiating backup/restore of a unit that is password protected.

(IN1606) Added Feature - 'Lock Aspect Ratio' option – Users now have the ability to lock the aspect ratio of the active input when adjusting image size by utilizing a checkbox within the 'Size and Position' tab.

SOFTWARE RELEASE HISTORY

Released Version: 1.0

Affects:

Engineering Revision:

Software Revision: N/A

Date: April 17, 2013

The following is a list of changes and fixes in this release.

Initial Release – This is the initial release of this software product.